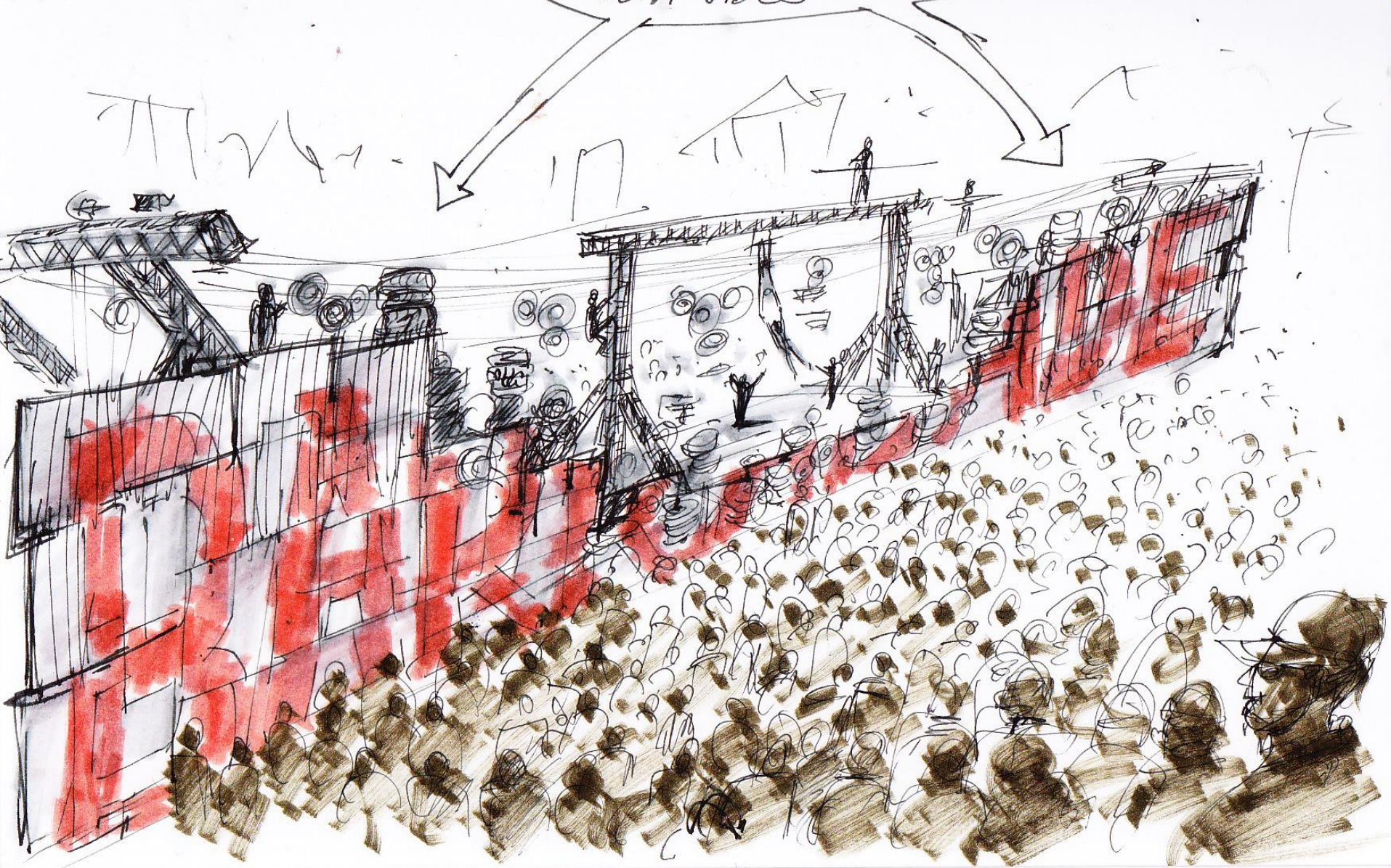


Barricade

Design sketches 2

11 Jan 2011

AUDIENCE ON
BOTH SIDES



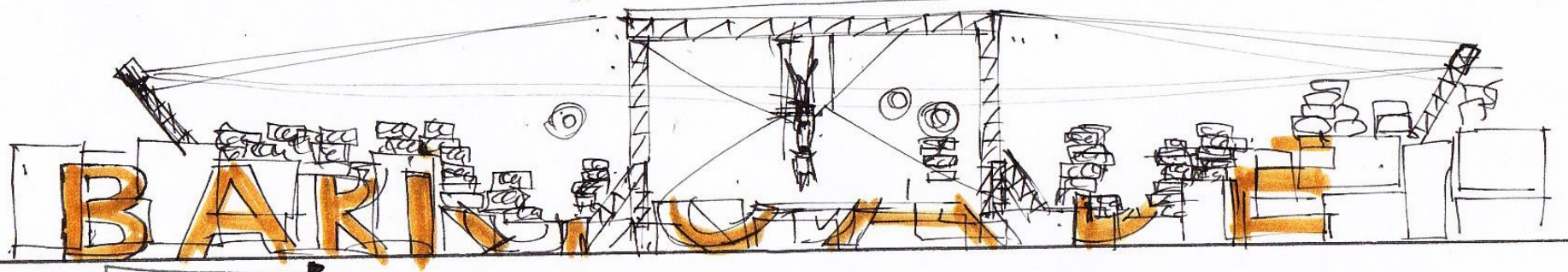
Design Concept

- The audience is divided by a barricade, created by two customised trucks and a landscape of car / truck tyres – the reference is French lorry drivers' protests
- A breach in the wall creates the playing space for a performance, which explores the theme of barriers, walls, obstacles
- The infrastructure for the performance is created by a combination of permanent trusses built into the trucks; temporary scaffolding, sourced locally; and car / truck tyres (which replace wall panels and bamboo poles)

Rigging / engineering issues to explore

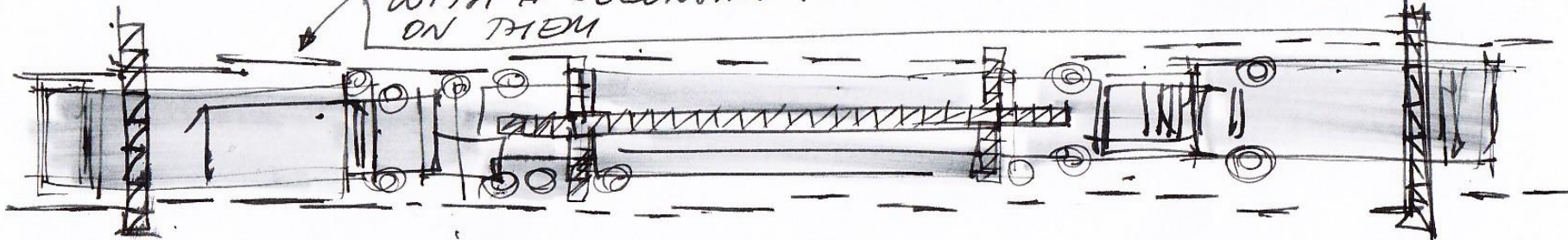
- Attached are a series of propositions for how the concept might be realised
- These are intended as a starting point for further thinking and development with the wider team
- Ideally, we would like people, circus equipment and tyres to be able to:
 - Whizz and (wire) walk across the whole gap, or significant sections of it, preferably crossing each other on the way (think 3 line washing line)
 - Drop into positions within the gap
 - Swing towards / over the audience on both sides

ONE GOAL POST

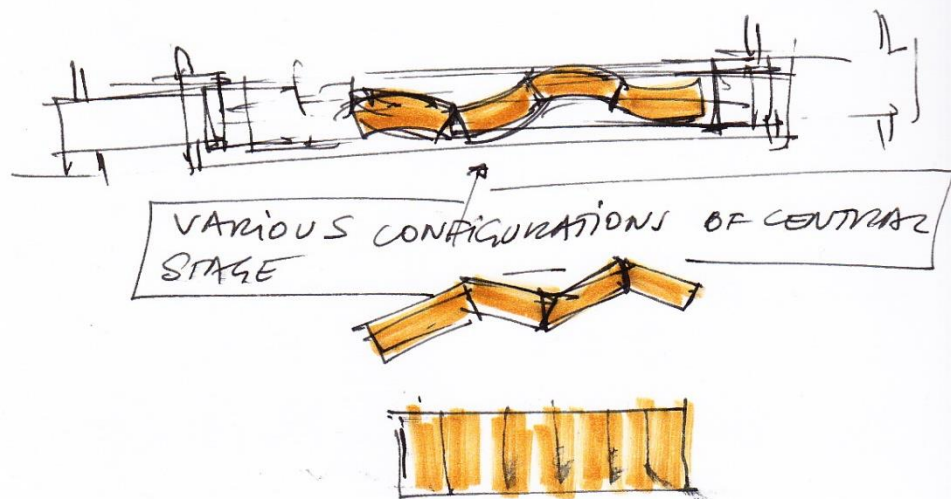
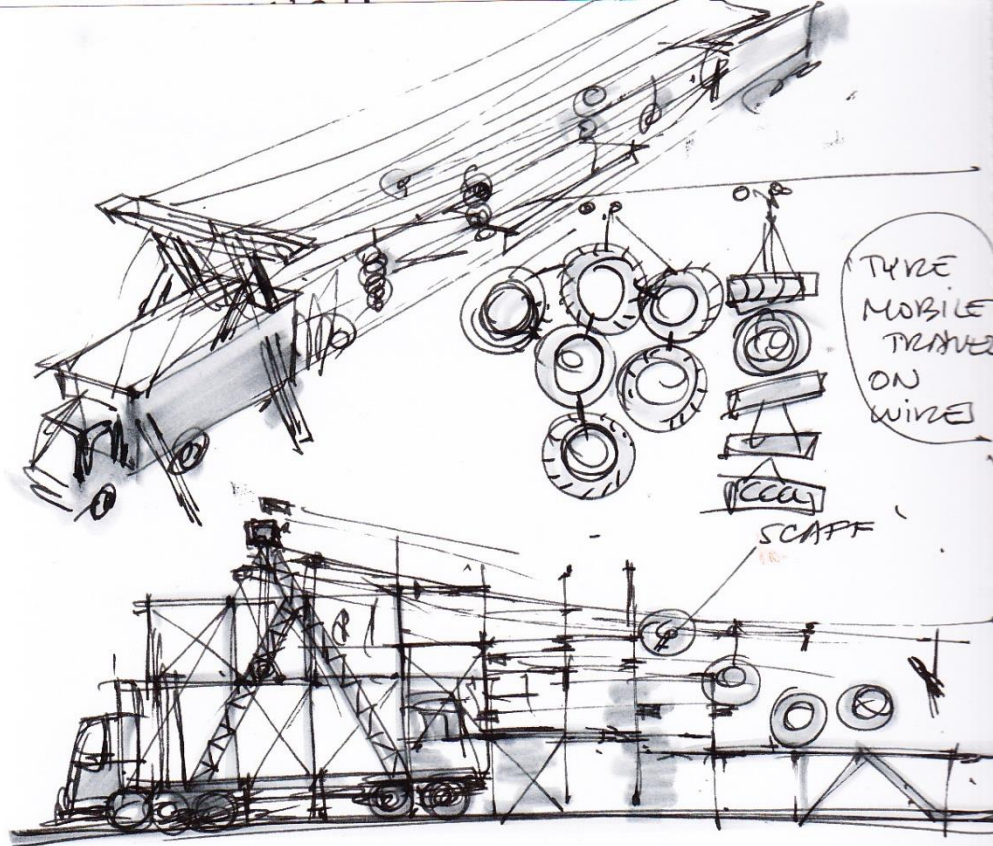


SIDE
VIEW

PANELS AND STRETCH FABRIC
ON PANELS CREATE A SURFACE
WITH A DECONSTRUCTED 'BARRICADE' PAINTED
ON THEM



TOP VIEW



LIGHTS MOUNTED ON
SCAFFOLD AND RIG

WINCHES
PULL TROLLEYS
ON WIRES

TYRE MOBILES
ARE TRAVELLING
ON WIRES

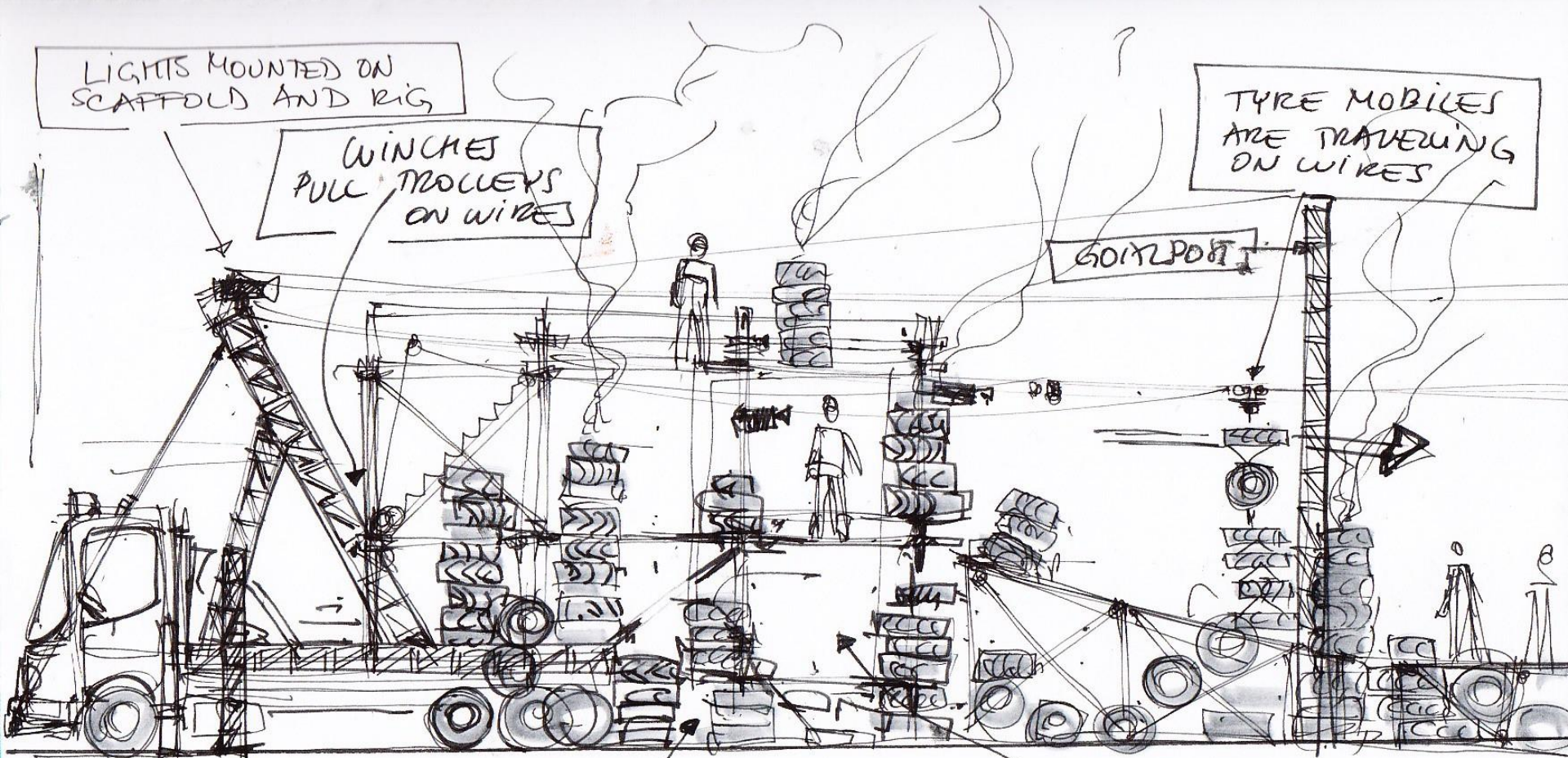
GOITLPORT

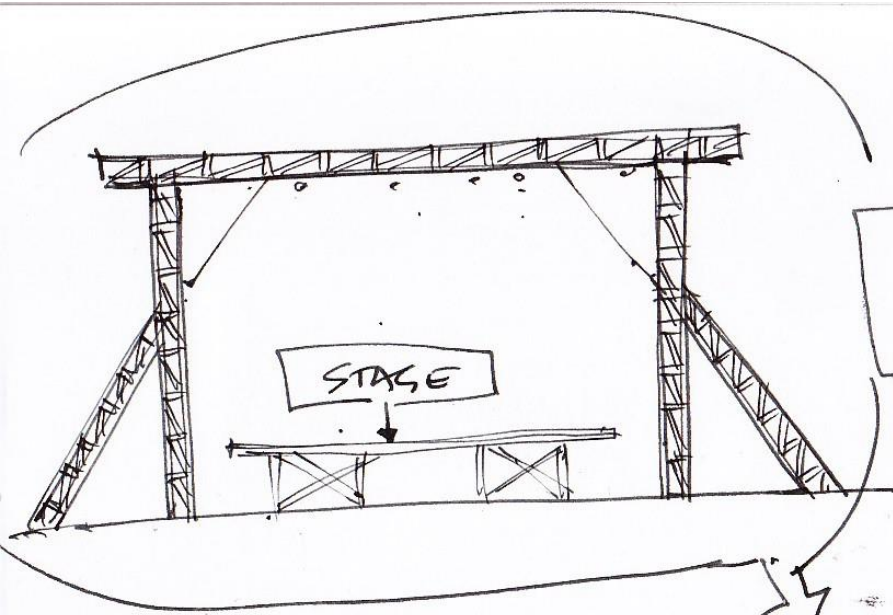
TRUCK

TYRE DRESSING WITH
SMOKE MACHINES INSIDE

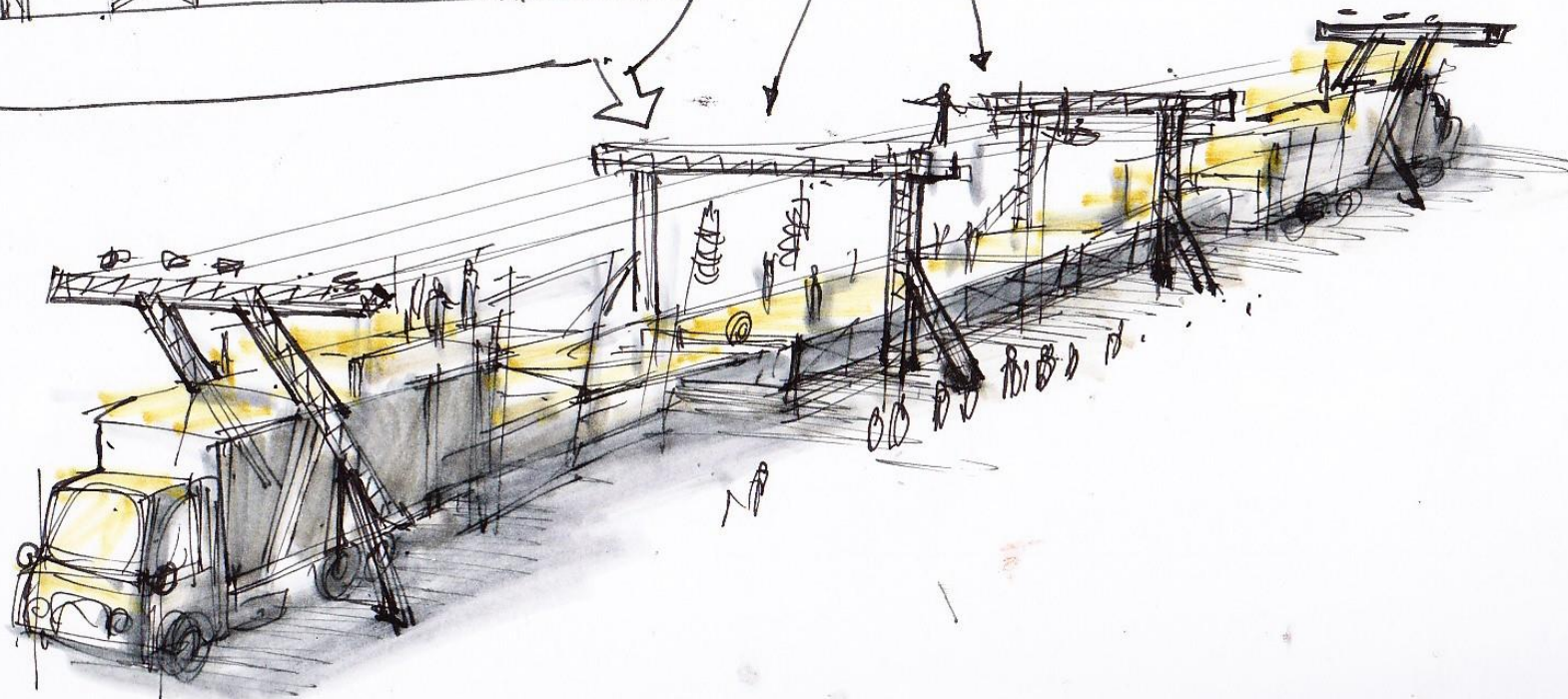
TEMPORARY
SCAFFOLD IS
LINKED TO
PERMANENT
RIGGING ON
TRUCKS

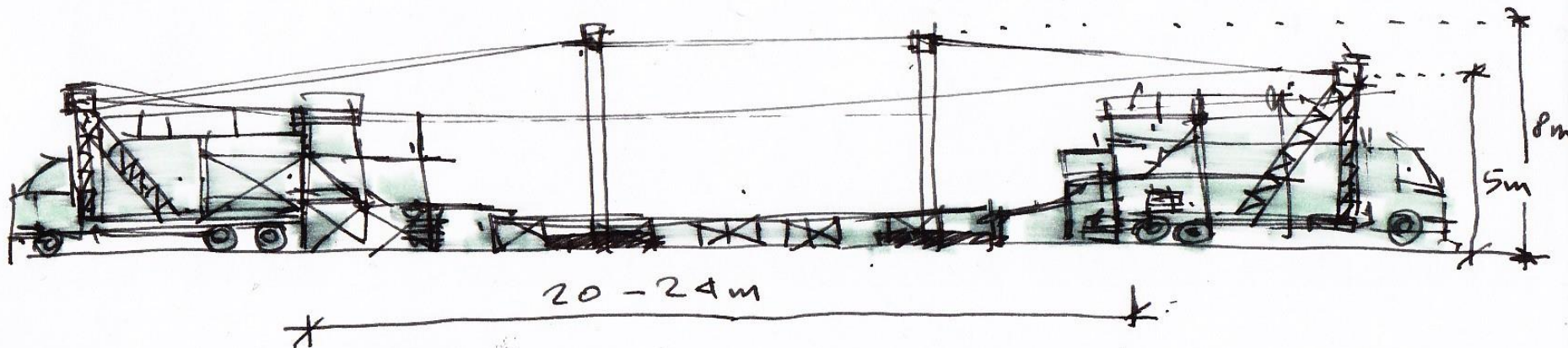
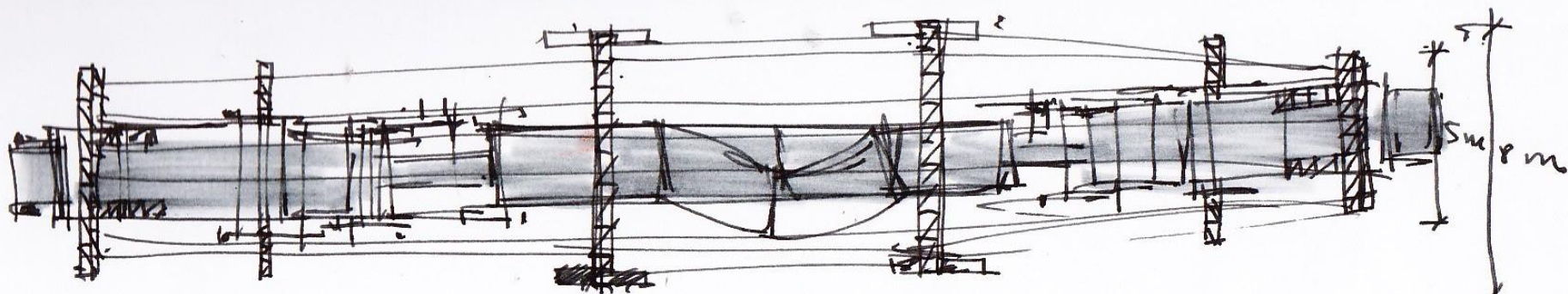
CENTRAL
STAGE





2 GOALPOSTS PROVIDE
RIGIDITY FOR SWING





Next Steps

- Dan to meet with wider team this week to explore and develop practical solutions for this design concept
- w/b 17 Jan. Costing and feasibility
- w/b 24 Jan Refine design concept if required, prepare for devising
- w/b 31 Jan Devising
- w/b 7 Feb Detailed design